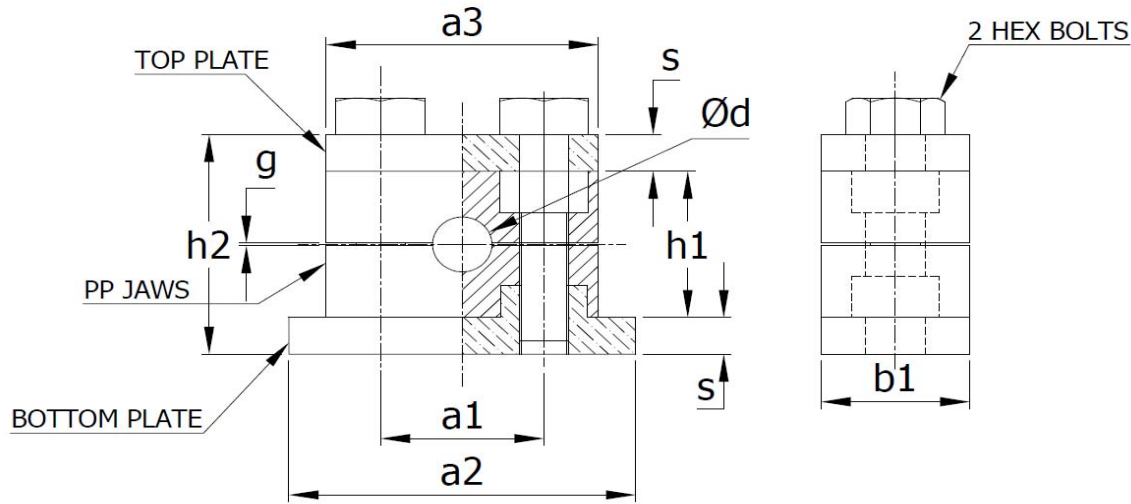


PIPE CLAMP - HEAVY SERIES - DIN 3015 -PART -2



ONE SET = ONE TOP PLATE + ONE BOTTOM PLATE + 2 HEX BOLTS (8.8 Grades)+ ONE PAIRS OF PP JAWS

DIN GROUP	OUR PART CODE	PIPE OD Dia = d	a3	a1	h1	h2	g	b1	a2	S	BOLT SIZE
	Ve-Lock	in MM	in MM	in MM	in MM	in MM	in MM	in MM	in MM	in MM	Size X Length
1	PCH 6 MM	6	55	33	32	48 TO 49	0.6 TO 1 MM	30	72	8	M 10 x 45 MM
	PCH 6.4 MM	6.4									
	PCH 8 MM	8									
	PCH 9.5 MM	9.5									
	PCH 10 MM	10									
	PCH 12 MM	12									
	PCH 12.7 MM	12.7									
	PCH 13.5 MM	13.5									
	PCH 14 MM	14									
	PCH 15 MM	15									
	PCH 16 MM	16									
	PCH 17.2 MM	17.2									
	PCH 18 MM	18									
2	PCH 19 MM	19	70	45	48	64	0.6 TO 1 MM	30	86	8	M 10 x 60 MM
	PCH 20 MM	20									
	PCH 21.3 MM	21.3									
	PCH 22 M	22									
	PCH 25 MM	25									
	PCH 26.9	26.9									
PCH 28 MM	28										

ONE SET = ONE TOP PLATE + ONE BOTTOM PLATE + 2 HEX BOLTS (8.8 Grades)+ ONE PAIRS OF PP JAWS

DIN GROUP	OUR PART CODE	PIPE OD Dia = d	a3	a1	h1	h2	g	b1	a2	S	BOLT SIZE
	Ve-Lock	in MM	in MM	in MM	in MM	in MM	in MM	in MM	in MM	in MM	Size X Length
3	PCH 30 MM	30	85	60	60 TO 62	76 TO 78	0.6 TO 1 MM	30	100	8	M 10 x 70 MM
	PCH 32 MM	32									
	PCH 33.7 MM	33.7									
	PCH 35 MM	35									
	PCH 38 MM	38									
	PCH 42 MM	42									
4	PCH 42.3 MM	42.3	115	90	89 TO 92	109 TO 112	2 MM	50	140	10	M 12 x 100 MM
	PCH 48.3 MM	48.3									
	PCH 50.8 MM	50.8									
	PCH 60.3 MM	60.3									
	PCH 63.5 MM	63.5									
	PCH 65 MM	65									
5	PCH 70 MM	70	152	122	120 TO 122	137 TO 140	2 MM	65	180	10	M 16 x 130 MM
	PCH 73 MM	73									
	PCH 76.1 MM	76.1									
	PCH 88.9 MM	88.9									
6	PCH 102 MM	102	210	168	163 TO 168	193 TO 195	3 MM	80	230	16	M 20 x 180 MM
	PCH 114 MM	114									
	PCH 127 MM	127									
	PCH 133 MM	133									
7	PCH 141 MM	141	254	205	200	230 TO 232	3 MM	100	275	16	M 24 x 225 MM
	PCH 152 MM	152									
	PCH 168 MM	168									
8	PCH 177.8 MM	177.8	323	265	270	320	3 MM	130	345	25	M 30 x 300 MM
	PCH 193.7 MM	193.7									
	PCH 216 MM	216									
	PCH 219 MM	219									